



OFFERS OVER

**£159,000**

**Redding Road**  
Strathaven, ML10 6FA

## PROPERTY SUMMARY

Located on the outskirts of Strathaven, surrounded by beautiful countryside, and stunning views all the way to Loudoun Hill is this extended, semi-detached, three-bedroom, villa requiring a degree of upgrading. With substantial family accommodation, generous gardens, versatile garage/outbuilding, and excellent local schooling this great home offers a discerning purchaser an opportunity to acquire a fabulous family home they can add value to.

The spacious layout of accommodation comprises; broad and welcoming reception hallway with large understairs cupboard, three-piece family bathroom with over-bath shower, lounge with French doors leading to raised timber deck covered by a pretty, solid wood pergola, and log burning stove, fitted kitchen, and dining/family room with access to garden.

On the upper level are three, well-proportioned, double bedrooms all of which enjoy the pleasant views, two of which have fitted wardrobes. Completing the first-floor accommodation is a generous hall storage cupboard.

This great family home further benefits from double glazing, oil fired central heating, driveway with space for several cars, substantial garage/workshop, and generous gardens with open rural outlook.

3



1



2









## LOCAL AUTHORITY

South Lanarkshire

## TENURE

Freehold

## COUNCIL TAX BAND

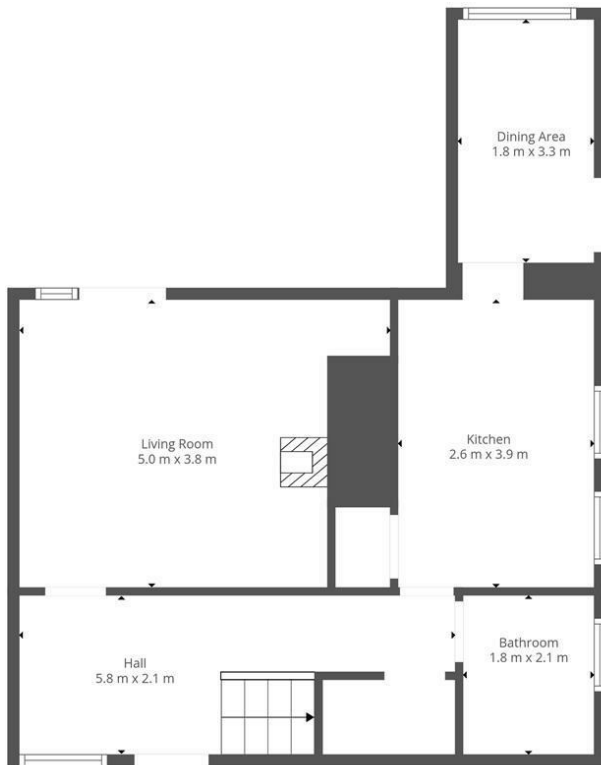
B

## VIEWINGS

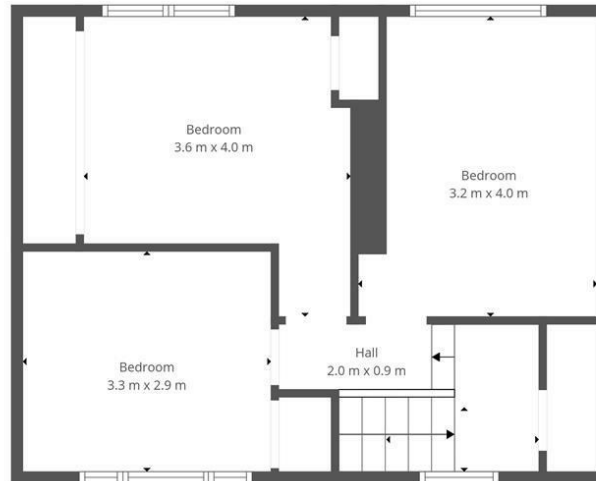
By prior appointment only

Energy Efficiency Rating		Current	Potential
<i>Very energy efficient - lower running costs</i>			
(92 plus) <b>A</b>			
(81-91) <b>B</b>			
(69-80) <b>C</b>			70
(55-68) <b>D</b>			
(39-54) <b>E</b>		51	
(21-38) <b>F</b>			
(1-20) <b>G</b>			
<i>Not energy efficient - higher running costs</i>			
<b>Scotland</b>		EU Directive 2002/91/EC	

Agents Note: Whilst every care has been taken to prepare these particulars, they are for guidance purposes only. All measurements are approximate and are for general guidance purposes only and whilst every care has been taken to ensure their accuracy, they should not be relied upon and potential buyers/tenants are advised to recheck the measurements



Ground Floor



1st Floor



This Floorplan Is Intended To Give An Indication Of The Layout Only.



**OFFICE ADDRESS**  
9 Townhead Street  
Strathaven  
ML10 6AB

**OFFICE DETAILS**  
01357 510088  
judithmcgill@cruive-  
estateagents.co.uk